



State of Idaho
March, 2022

Governor's Office of Energy and Mineral Resources

The Idaho Governor's Office of Energy and Mineral Resources (OEMR) is responsible for coordinating energy and mineral resource planning and policy development for the State.

Follow us on Twitter

Subscribe to our
Monthly Newsletter

Visit our Website

Idaho Updates

Idaho Minerals

Idaho is home to a wealth of different minerals that are featured predominantly in everyday life and in the advancement of modern science. Idaho leads the nation in producing the following minerals:

Lead, Zinc, Pumice, Cement, Phosphate, Copper, Silver & Lime

Link: ["The Mineral Industry of Idaho"](#)

Hybrid and Electric Vehicles

With gasoline prices surging nationwide, the electric vehicle market in Idaho is growing.

Link: ["No its not cheaper to fill a gas powered vehicle than charge an electric one."](#)

Renewable Energy

Over the past year the BLM has received several proposals to develop wind and solar facilities in the south central region of Idaho.

Link: ["Several Renewable Energy Projects are Proposed"](#)

Brainteaser:

How well do you know Idaho energy?

Answer our three quick questions regarding energy to get your day off to a good start.

1) Idaho has some of the lowest energy costs in the nation. Electric rates in Idaho fall below the U.S. average by what percent?
A) 5%
B) 10%
C) 20%
D) 25%

2) In what year did Arco, Idaho become the 1st community in the nation to receive its entire power supply from nuclear power?

3) Where does the majority of Idaho's electricity come from?

**Answers are listed on the bottom of this newsletter.*

Link: [Idaho - State Energy Profile Analysis - U.S. Energy Information Administration \(EIA\)](#)



Energy Efficiency

The Idaho Legislature has been discussing Energy Codes often this session. What is the purpose of energy codes?

Link: ["Energy Codes 101: What are they and what is DOE's role?"](#)

Nuclear Energy

Idaho National Laboratory has committed to achieving net-zero carbon emissions by 2021. Nuclear power plants provide more than 50% of the nation's carbon-free electricity.

Link: ["Idaho National Laboratory to Drastically Reduce Carbon Emissions."](#)

We want to hear from you! Take our quick survey on energy topics that are important to you.

At OEMR we want to make sure we are addressing your needs and are bringing you the information that you find interesting.

The energy sector today is fascinating, whether it be energy efficiency, renewable energy, alternative fuel transportation, minerals or nuclear energy, each sector relies on one another and contributes to Idaho providing reliable and affordable energy to its' citizens. What area of energy do you find interesting? Complete our survey by selecting the link below:

Survey: <https://www.surveymonkey.com/r/56JDDX2>



How efficient is your water heater?

The average American household spends 14%-18% of their utility bill on water heating. As the weather warms up, consider these simple suggestions in ["Which Water Heater is Right for You"](#) to decrease your energy use and increase your financial savings.

An average 8 minute shower can use as much as 10 gallons of hot water. Visit the [Energy Cost Calculator for Electric and Gas Water Heaters](#) link for additional estimates on hot water consumption associated with daily tasks performed by the average consumer.

What is Driving Electric Vehicles in Idaho?

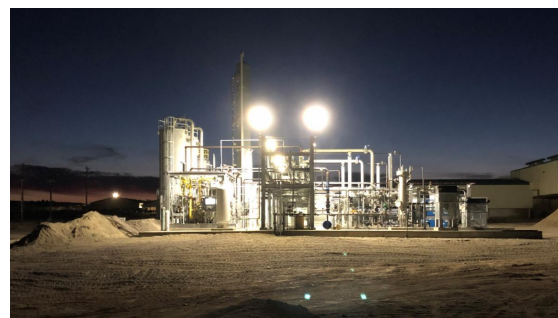
According to the Department of Energy, an electric gallon or the amount of electricity it takes to get a gallon of gas worth of energy, costs about \$.90 in Idaho. Electric pickup trucks are increasing EV adoption in Idaho, especially in rural areas. Local dealerships are receiving substantial pre-orders for the Ford F-150 Lightning, which will begin to launch in late-spring. The vehicle provides the ability to power a home throughout an outage for three days and offers a 230-300 mile range for commuting.

Look at the details further in the ["EV Chargers in Idaho" document](#).

Electricity Costs in Idaho vs. Nationally

Idaho is recognized as a state that provides the most affordable electricity. Compare other states to Idaho by visiting the [Electricity Rates by State](#) link.

Idaho average: \$10.33 per kWh
National average: \$13.75 per kWh





The Legislature is in Session

Below please find a link to the following energy topics that have been discussed in the Idaho State Legislature this session.

[HENV – Idaho State Legislature](#)

Recent Articles

["March Madness: Slam Dunk Energy Efficiency"](#) (US Department of Energy)

["Permit Approved for Large Power County Solar Farm"](#) (Idaho State Journal)

["Buy American Rule Could Pave Way for Minerals."](#) (EE News)

["New Wind Turbine Project Brings Jobs to Southern Idaho"](#) (KMVT)

["Blaine County Leaders Set Sights on Renewable Energy Micro-grid"](#) (Idaho Mountain Express)

["A Look at Meta's Kuna Location"](#) (Idaho Statesman)

["What's the difference between EV Charging Levels?"](#) (Freewire)



Meet OEMR Staff

Lori Wolff- Interim Administrator

Marissa Warren- Energy Program Manager/ISEA

George Lynch- Legal Counsel/Minerals Program Manager

Tammy Japhet- Financial Manager

Amanda Galvez- Fiscal Specialist/State Energy Loan Program

Emily Her- Policy Analyst/Transportation, EVSE

Alexa Sakolsky-Basquill- Policy Analyst/Energy Efficiency, GLBE, EE Awards

Andrew Mentzer- Policy Analyst/Minerals

Brenna Garro- Policy Analyst/Renewables

OEMR Programs

OEMR offers the following programs to support enhanced energy efficiency in Idaho

Energy Efficiency Awards

**Applications are now being accepted for 2022 Idaho Leadership in Energy Efficiency Awards- Apply today!*
Idaho Awards for Leadership in Energy Efficiency – Energy and Mineral Resources

Government Leading By Example

Government Leading by Example – Energy and Mineral Resources (idaho.gov)

State Energy Loan Program

State Energy Loan Program – Energy and Mineral Resources (idaho.gov)

Electric Vehicle Supply Equipment Program (EVSE)

Electric Vehicle Supply Equipment (EVSE) Program – Energy and Mineral Resources (idaho.gov)



Answers to the Brainteaser:

- 1) D- 25%
 - 2) 1955
 - 3) Hydroelectric power
- *If you said the Snake River you get extra credit. Nice work!